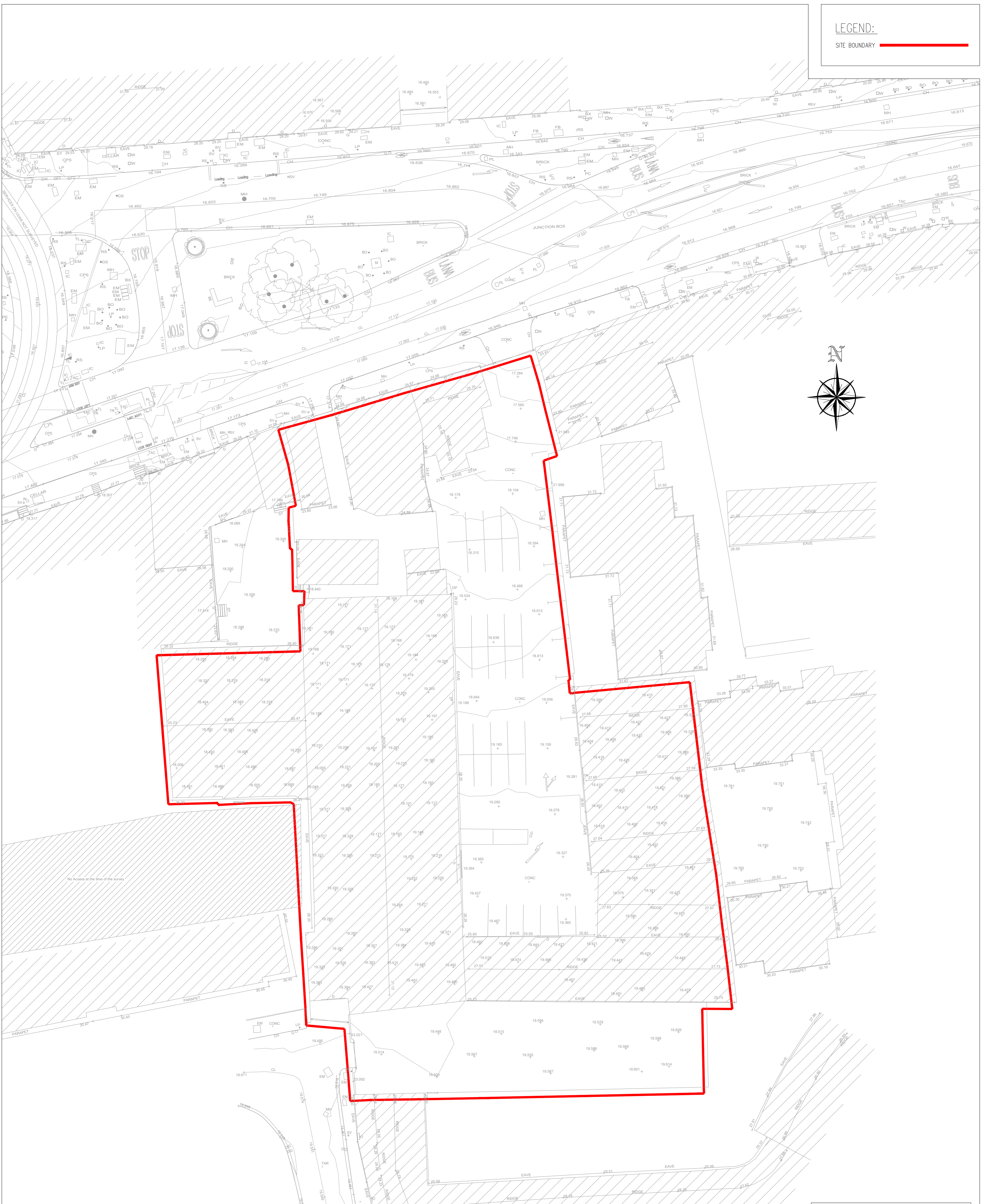


LEGEND:

SITE BOUNDARY



PLANNING DRAWING.
NOT FOR CONSTRUCTION.
ALL LEVELS GIVEN ARE
RELATIVE TO ORDNANCE DATUM.
THIS DRAWING HAS BEEN ISSUED FOR INFORMATION
PURPOSES ONLY AND MUST NOT BE USED
FOR CONSTRUCTION UNDER ANY CIRCUMSTANCES

TOPOGRAPHICAL SURVEY.
SCALE= 1:250

- NOTES**
- For setting out refer to Architect's drawings.
 - This drawing to be read in conjunction with all other Architectural and Engineering drawings and all other relevant drawings and Specifications.
 - DO NOT SCALE THIS DRAWING.** Use figured dimensions only.
 - No part of this document may be reproduced or transmitted in any form or stored in any retrieval system of any nature without the written permission as copyright holder except as agreed for use on the project for which the document was originally issued.
 - Ordnance Survey Ireland Licence Number EN 0074020

Rev. No.	Date	REVISION NOTE	Dm. By	Chkd. By
P1	27.11.2020	ISSUED FOR PLANNING	JS	NB

Architect	EML Architects
Project	Proposed Development At James St.
Title	Topographical Survey
Dwg. No.	C191-CSC-ZZ-XX-DR-C-0001
Date	07.05.2020
Dm by	JS
Chkd by	AD
Apprd by	DR
Scale	1:250 @ A1
Revision	P1

CS Consulting Group
DUBLIN | LONDON | LIMERICK

Head Office
19-22 Dame Street, Dublin 2
T: +353 (0)1 5480663 F: +353 (0)1 9011355
e: info@csconsulting.ie
w: www.csconsulting.ie

Quality Environment I.S. EN ISO 9001:2008
NSAI Certified Health & Safety I.S. EN ISO 14001:2004
CHSAS 18001:2007