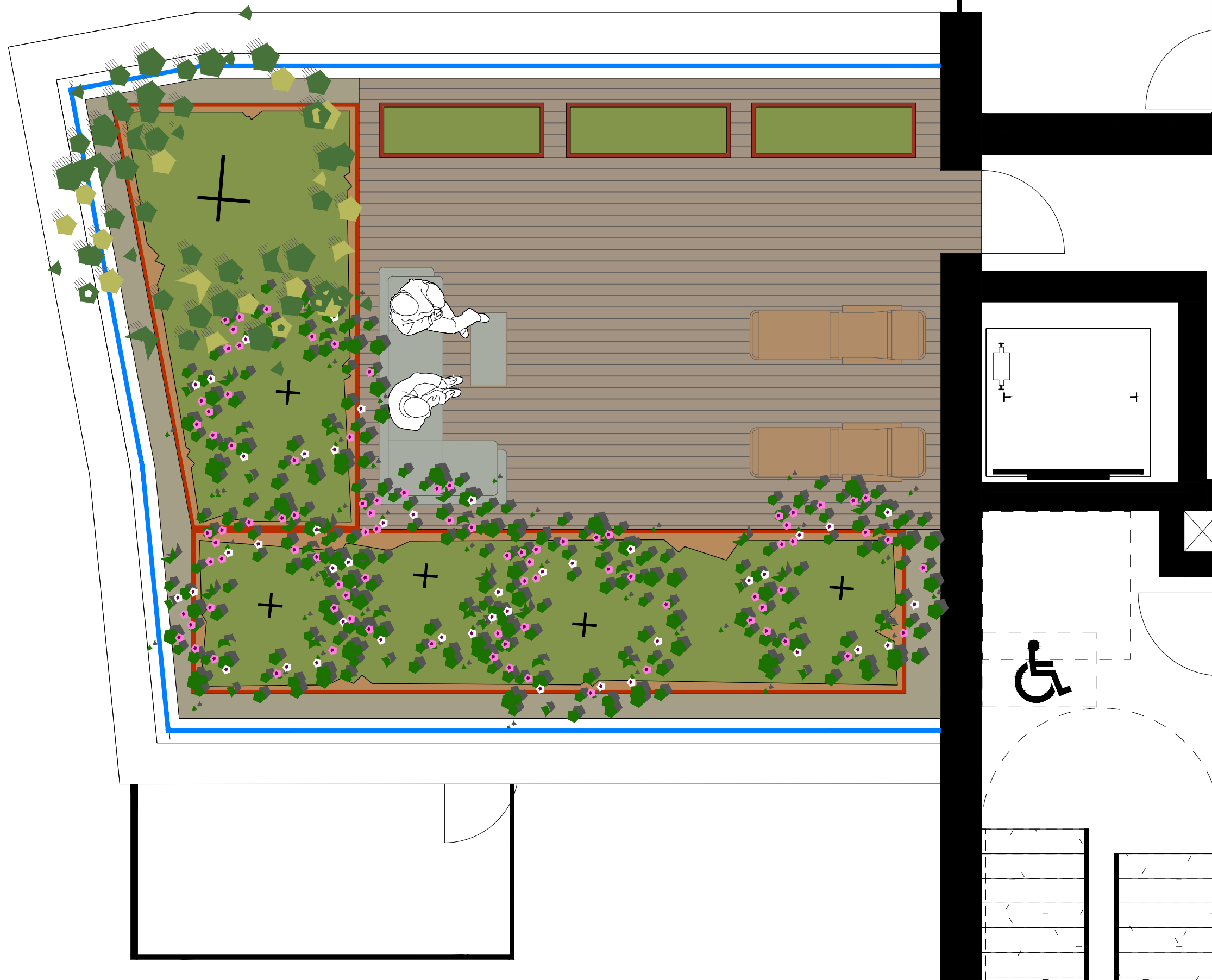



Copyright : All creative artwork, landscape symbology, text, legends, specifications, descriptions and illustrations used in our drawings and reports are the intellectual property of **ait** urbanism + landscape Ltd. and are not to be reproduced by others.



## LEGEND


### Hard Landscape

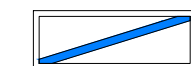
 **Composite Decking:**  
Approx 176mm x 30mm decking boards in charred or rustic oak finish.

 **Gravel:**  
20-40mm washed river pebble

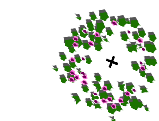
 **Roof Terrace Furniture:**  
Lounger

 **Roof Terrace Furniture:**  
Outdoor Sofa

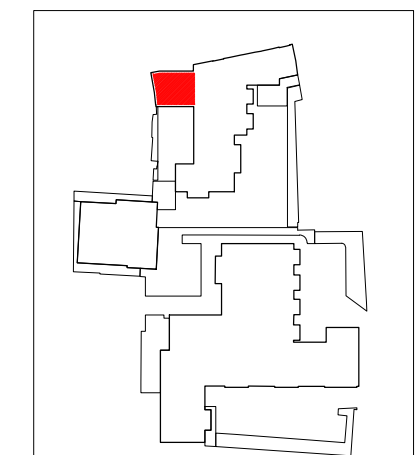
 Powder-coated Aluminium edging to planting beds.

 1800m. ht. Glass Balustrade

### Soft Landscape

 2½ to 3m. ht. multi-stem tree

 **Raised Planter Beds:**  
Ornamental Grasses and Herbaceous planting mix.



KEY PLAN

This drawing is the copyright of **ait** urbanism + landscape. Unless otherwise stated all dimensions are in millimetres. Where dimensions are not given, drawings must not be scaled and the matter must be referred to the Landscape Architect. If the drawing includes conflicting details/dimensions the matter must be referred to the Landscape Architect. All dimensions must be checked on site. The Landscape Architect must be informed, by the Contractor, of any discrepancies before work proceeds.

NOTES:

DATE	REV.	DESCRIPTION	DRAWN BY:
-	-	-	-



3rd Floor Newmarket House,  
Newmarket Square,  
Dublin 8  
Ireland  
t: + 353 86 1739522  
www.ait-place.ie

**ISSUE STATUS:**

**PLANNING**

DRAWING NO:  
**20D03-DR-210**

REVISION:  
-



**CLIENT:** Cherry Core Ltd. and Jasmine Perfection Ltd.

**PROJECT:** James Street Steelworks

**DRAWING:** Landscape Plan - 4th Floor Roof Terrace

DRAWN BY:  
GF

1st ISSUE:  
06.11.2020

**NORTH**

PROJECT NO:  
20D03

SCALE:  
1:50

SHEET SIZE:  
A3

CHECKED BY:  
GF